

**From:** Vik Khanna  
**To:**  
**Cc:**  
**Subject:** VSB Communications & LRFP  
**Date:** Monday, January 11, 2021 11:00:59 PM

---

Dear VSB Communications & LRFP Team,

Hi! Just finished DPAC's first 3 hour information gathering session with parents. Another is planned for tomorrow.

Here's pretty much verbatim from a parent:

**"If I did not get your notification via Facebook to attend this session, I would have had no clue as to what is going on, or that a LRFP was released. How is the VSB informing parents?"**

Please consider this important enough for the VSB Communications Team to do a full social media on it.

Also consider separating out the [lrfpfeedback@vsb.bc.ca](mailto:lrfpfeedback@vsb.bc.ca) so that feedback is welcome until noon Jan 25<sup>th</sup> for the Board Meeting and that feedback sent before noon on Jan 13<sup>th</sup> will be considered at the FPC meeting.

Thanks, in advance!

Best Regards,

Vik Khanna  
Vancouver DPAC Member At Large  
DPAC Facilities Committee Chair

**From:** Lisa McAllister  
**To:** [LRFFeedback](#)  
**Subject:** LRF Feedback  
**Date:** Monday, January 11, 2021 9:49:09 PM  
**Attachments:** [image.png](#)  
[image.png](#)  
[image.png](#)  
[image.png](#)  
[image.png](#)

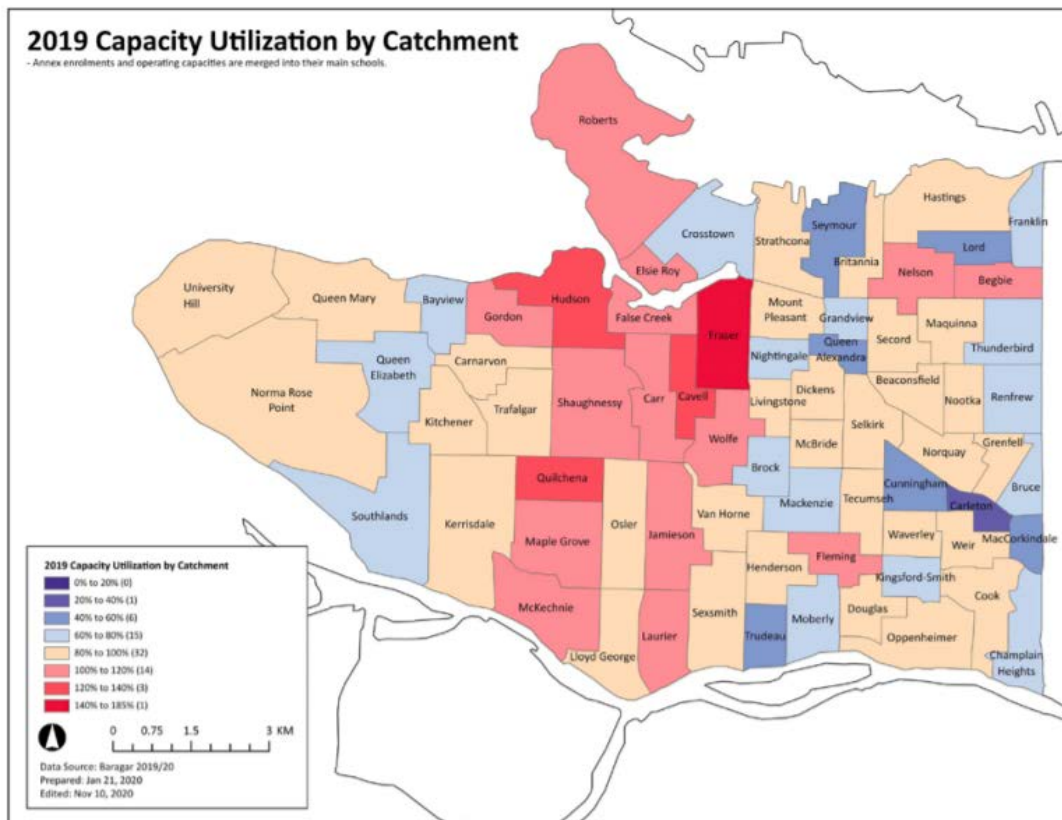
Dear John & Team,

What a comprehensive document!

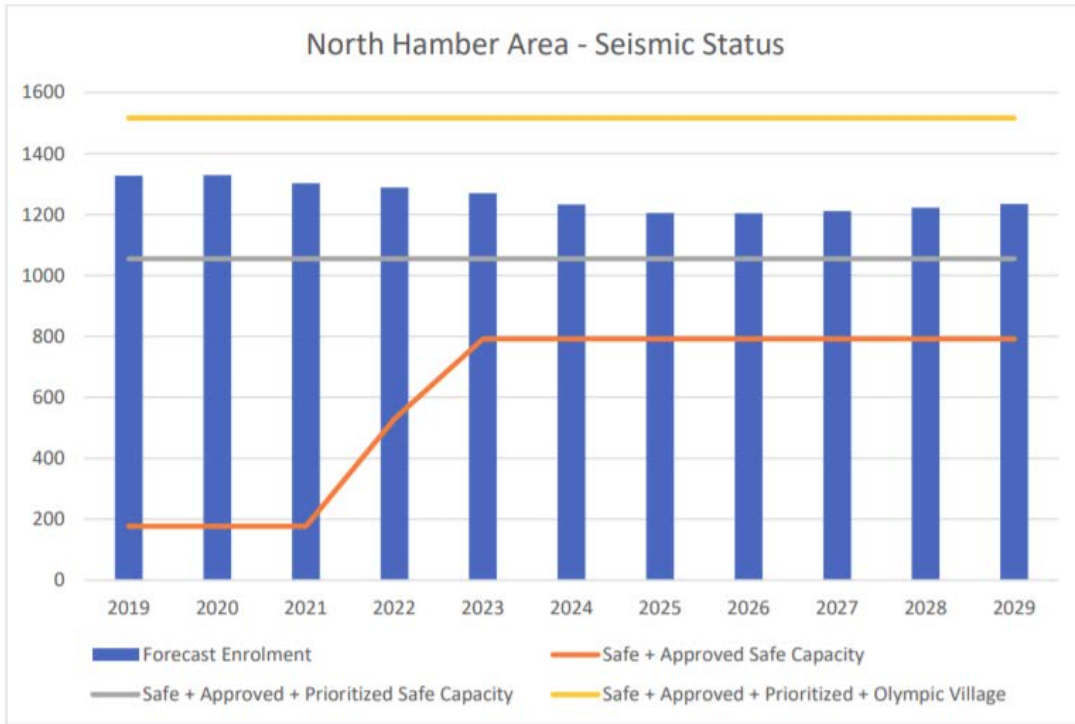
A bit of feedback I ask you to consider:

**PAGE 49/175** This map gives the impression and has been incorrectly interpreted previously in discussions with the Ministry where schools (i.e. Crosstown/Carleton) are restricting enrollment. If there are exceptional circumstances it may be much more appropriate to exclude these from the capacity utilization so that the uninformed who are referring to the map will understand that more information is required.

2019 Capacity Utilization at Elementary Schools



**PAGE 82/175** Should the Yellow and Grey lines see the 2021-23 increase that the Orange line has which I believe accounts for the increase in Wolfe & Cavell safe seats?



PAGE 88/175 Olympic Village will be located in the North Hamber area

1.13.5 SEISMIC PROGRAM CONSIDERATIONS

- 41% of secondary capacity is seismically safe, 45% of elementary capacity is seismically safe
- The 2021-22 capital plan submission provides a framework for increasing the seismically safe capacity in the central region
- Hamber replacement school is scheduled for occupancy in 2025
- Cavell, Wolfe, Livingstone, and Lloyd George are moving towards completion
- The new school at Olympic Village will provide seismically safe capacity in the South Hamber area

1.13.6 CATCHMENT BOUNDARY CONSIDERATIONS

- Prior to occupancy, catchment boundaries for the school at Olympic Village will need to be established
- Catchment boundary adjustments as an enrolment management strategy in the South Hamber area are not recommended prior to the establishment of a catchment for the school at Olympic Village

APPENDIX D: Elementary Programs & Locations

Gordon and Hudson's FI programs that are being phased out are not referenced in the same way that the Jamieson Mandarin phasing is.

|                                       |  |  |
|---------------------------------------|--|--|
| <b>DRAFT</b><br><b>March 10, 2020</b> | <b>Elementary</b><br><b>District Choice and</b><br><b>School-Specialty* Programs</b> | <b>Elementary</b><br><b>Student Support Programs</b> |
|---------------------------------------|--|--|

|                  |  |   |
|------------------|--|---|
| <b>Gordon</b>    | Late French Immersion (6 - 7)                            |   |
| <b>Grandview</b> |  |   |
| <b>Grenfell</b>  |  |   |
| <b>Hastings</b>  | Early French Immersion (K - 7)                           |   |
| <b>Henderson</b> |  | Behaviour Support Program<br>ExSEL (Intermediate) |
| <b>Hudson</b>    | Early French Immersion (K - 7)                           |   |
| <b>Jamieson</b>  | Mandarin Bilingual (4 - 7)<br>no grades 4s for Sept 2020 |   |

Finally, a very useful appendix would be a district-wide CHOICE PROGRAM Map at both an Elementary and Secondary level which would better visually present where the choice programs reside.

Looking forward to hearing continued discussions regarding school planning.

Regards,  
Lisa

## **LRFPfeedback**

---

**From:** Caryn Brighten  
**Sent:** Tuesday, January 12, 2021 1:23 PM  
**To:** LRFPfeedback  
**Subject:** LRFP Feedback

Hello,

I am writing today to express my concerns regarding the VSB's Appendix G, H and I showing forecasted enrollment at Cavell, and other Cambie Corridor schools.

My children both attend Cavell currently, and as I am sure you are aware, it is, and has been for several years, over capacity. These children are being stuffed into many onsite portables which have taken a large area of outdoor play space away and resulted in crowded outdoor play areas.

I do not see how your assessment of future enrollment can be either accurate, or reliable, given it is indicating declining enrollment moving forward into 2030. There are several hundred, if not thousands, of units currently in the pre-construction/construction phase that will be nearing completion over the next few years. With the rising cost of a single family detached homes, many young families are simply not able to afford the cost of SFD homes, and are looking to a less unaffordable option such as condos and townhomes. I think it will be detrimental to the future LRFP's to not consider the impact of these regional developments on housing, families and communities. If we do not plan for increasing enrollment capacity, where are these children going to go to school? Will they be expected to attend out of catchment schools necessitating busing and further commutes across communities? This sounds like poor planning on VSB's part.

Sincerely,

Caryn Brighten

## LRFPfeedback

---

**From:** Jason Chisham  
**Sent:** Tuesday, January 12, 2021 3:37 PM  
**To:** LRFPfeedback  
**Subject:** Feedback on Point Grey/Prince of Wales consolidation proposal

Hello. I read through the section of the report pertaining to the Southwest region. The most important consideration should be to quickly get students into a seismically safe building. Waiting on a business case to proceed with both Point Grey and Prince of Wales will likely see us waiting a long time. I think the consolidation of PG and PW schools makes sense for this area since when you add Magee, there are 3 high schools in very close proximity. And if it means a decision can be made to expedite the construction of a seismically safe school then it is the right choice. Based on the enrollment projections, it looks reasonable. A few thoughts:

- Build a new larger school at Prince of Wales site. Include mini school and trek programs.
- May need to expand Magee school to accommodate extra students, but this should be relatively quick and cost effective (compared to rebuilding PG school)
- Relocate PG mini school program to Magee. This way there are still 2 mini school programs available in the region
- The Point Grey site should be kept as a park with sports fields and other recreational facilities. Could even become the location for a new Kerrisdale community centre. Reserve space on the site for a future school if there is a significant shift in demographics.

Regards,  
Jason

## LRFPfeedback

---

**From:** Greg Marsh  
**Sent:** Tuesday, January 12, 2021 4:27 PM  
**To:** LRFPfeedback; dpac  
**Subject:** Fw: Imp. Mssg. from PAC:LRFP comments due tmr by Noon

If the VSboard actually wanted our feedback then they would have not sent this just hours before the cut-off date. Obviously, they have zero intention of listening anyway.

*Greg Marsh .*

----- Forwarded Message -----

**From:** Point Grey Secondary School  
**To:** greg  
**Sent:** Tuesday, January 12, 2021, 02:56:31 p.m. PST  
**Subject:** Imp. Mssg. from PAC:LRFP comments due tmr by Noon

Dear Parents,

The VSB released its Long Range Facilities Plan (LRFP) late Monday.

The Board is voting on this [2020 Draft Long Range Facilities](#) Plan - (175-page PDF, with links to appendices on page 5) at tomorrow's 5 p.m. Facilities Planning Meeting. (you may need to cut and paste the link).

**Please submit any feedback on the draft plan before noon on Jan. 13 by email to: [lrfpfeedback@vsb.bc.ca](mailto:lrfpfeedback@vsb.bc.ca), and copy our DPAC Rep at**

In addition to the full report above, here is the section that pertains directly to Point Grey and its feeder schools:

**See "Future scenarios" taken from page 11 of the Draft LRFP below below.**

You'll see that the Board seems to recommend consolidating Point Grey and Prince of Wales in one replacement school. (This is the first public confirmation that the VSB is seriously considering this idea.)

### Future Scenarios

#### Scenario 1 – Status Quo

- Point Grey has not advanced in the SMP, and is not prioritized in the 2021-22 5-year capital plan request
- Prince of Wales has not been prioritized in the 2021-22 5-year capital plan request. It may be challenging for the Ministry to prioritize funding to seismically upgrade both Point Grey and Prince of Wales secondary schools due to the weak business case for either of these projects.
- Most students attending a secondary school in the Southwest Region of the District will not have access to a seismically safe school for many years.

## Scenario 2 – Consolidation and Replacement Option

- Replacement of Prince of Wales and Point Grey with a single larger capacity modernized facility that along with Magee secondary has sufficient capacity to accommodate forecast secondary enrolment needs for the Southwest Region
- The District could engage in a community based public engagement with the Point Grey and Prince of Wales to envision seismic mitigation planning options such as the consolidation and replacement option for the two high risk secondary schools in the Southwest FOS region

We will update you in coming days and weeks as we get more information from the VSB and DPAC.

For info from the DPAC Exec and guidance on offering feedback:

(Any feedback received through that VSB email address will be considered at the meeting. Please note that all written submissions to the Board are considered to be public documents. The Board reserves the right to make any submissions available to the public.)

- Ask for minimal disruption assurance that any consolidated replacement school will be built before anyone is moved.
- Ask for business case for consolidated school.
- Are we going to be losing new people to this reason?

Sincerely,

PG PAC Executive Committee

*We are grateful to live, work and study on the unceded, ancestral territories of the Musqueam, Squamish and Tsleil Waututh Nations.*

---

Vancouver School District 39 would like to continue connecting with you via email. If you prefer to be removed from our list, please contact Vancouver School District 39 directly. To stop receiving all email messages distributed through our SchoolMessenger service, follow this link and confirm:

SchoolMessenger is a notification service used by the nation's leading school systems to connect with parents, students and staff through voice, SMS text, email, and social media.



## **LRFPfeedback**

---

**From:** Julee Kaye  
**Sent:** Tuesday, January 12, 2021 4:27 PM  
**To:** LRFPfeedback  
**Cc:** dpac  
**Subject:** LRFP must account for planned development of the Jericho Hill lands

Hello,

Past school boards have been sorely tempted to liquidate public schools but I would plead with this board to resist this temptation because there will always eventually futures in which these legacy assets are required for public education. As a case in point, the current LRFP - as extensive as it is - makes no attempt to account for the enrolment growth that should be expected on the Westside as the Jericho Hill lands and adjacent military base are redeveloped and densified (by a consortium of 3 First Nations, the City and the federal government). That site is larger than the entire Olympic Village site!

This development on what is currently non-residential land will increase enrolment at all surrounding elementary and secondary schools.

Whatever you do in the interim, please do not dispose of any public school sites!!!

Thank you,  
Julee Kaye

## **LRFPfeedback**

---

**From:** Tracy Spring  
**Sent:** Tuesday, January 12, 2021 5:58 PM  
**To:** LRFPfeedback  
**Subject:** LRFP downtown northeast section

Hi there,  
I've read through the LRFP and I'd like to express my concern about a couple of things briefly.

One is the somewhat recent rezoning of much of this area that allows for much more high density housing along streets like Renfrew and Nanaimo. East Hastings also has a lot of new residential buildings being built in the near future from Nanaimo to Boundary. As we know from the downtown region of Vancouver, many families now live in multi-unit dwellings and schools may be over capacity in this area (like downtown) in a handful of years. Assuming that enrolment will not increase in areas where there is active densification occurring will be problematic.

Another ongoing concern of mine is the need for kids to be able to walk or bike safely to school. Having schools remain open within neighbourhoods so all children can access their schools safely and without having to take transit or have associated costs with transportation is paramount.

Thank you very much for your time, Tracy Spring

## **LRFPfeedback**

---

**From:** Christine Davis  
**Sent:** Tuesday, January 12, 2021 6:36 PM  
**To:** LRFPfeedback  
**Subject:** Long range facilities plan

Hello,

Our daughter attends Tillicum Annexe and it's so important to the community that this school remains open.

It's walking distance for all the students, starting the day off healthy. The community at the school is inclusive and welcoming, being a small school is such a benefit to the children.

Tillicum remaining open should be part of your long range facilities plan.

Thank you

Christine Davis

## **LRFPfeedback**

---

**From:** Temmy>  
**Sent:** Tuesday, January 12, 2021 9:55 PM  
**To:** LRFPfeedback  
**Cc:** dpac  
**Subject:** LRFP comments

Dear Sirs,

I'm the parent of my son who is studying in Point Grey Secondary.

Regarding LRFP, I would like to ask for the following :-

- To avoid the disruption for the students of grade 11 and grade 12.
- To inform the students of grade 8 before any merged school or consolidated replacement school.
- To minimal disruption assurance that any consolidated replacement school will be built before anyone is moved.
- business case for consolidated school.
- are we going to be losing new people to this reason?

I hope that the feedback can delay for more one week. It's not enough time for us to discuss at school.

Thanks and regards,  
Temmy Lam  
The parent of Point Grey Secondary

Sent from my iPhone

## **LRFPfeedback**

---

**From:** Ken Xue  
**Sent:** Tuesday, January 12, 2021 11:05 PM  
**To:** LRFPfeedback  
**Cc:** dpac  
**Subject:** Feedback from parents to VSB2020 draft LTFP

Dear Sir/Madam:

Good day, I am the parent of a Grade 10 student in Point Grey Secondary ,we saw 2020 draft LTFP that lists Point Grey again as one of the secondary schools that VSB is considering consolation to other schools.

This is the third year that we son studied in Point Grey, we all know that 2020 and 2021 are special , lots of uncertainties and pressures on teachers, students and families. We have to adjust the new environment which are impacted by COVID-19, those youths are facing the challenges and we are glad that they can work things out together with the teachers and the family.

On the other side, we do think VSB should take every factor into consideration and provide these youth a relatively stable environment. Any school consolidation will impact the students significantly. We hope VSB can provide a transparent proposal for a broad and deep discussion, given sufficient time for feedback and consulting.

Every student has their dream to be realized and every family has their life plan.

There always will be a solution to accommodate each stakeholders' need. Hope there is a plan to have the least impact to students and teachers if it has to be .

All the best!

Your sincerely

Ken

## **LRFPfeedback**

---

**From:** bsutter  
**Sent:** Wednesday, January 13, 2021 7:17 AM  
**To:** LRFPfeedback  
**Subject:** Closure of schools

Hello

Looking at your LTR document on proposed actions for schools on the West Side of Vancouver it makes a modicum of sense. However, has the VSB taken into consideration the massive push the City of Vancouver is doing to densify. (For the record I do not agree with "densification" )In my humble opinion, the forecasted numbers for enrollment could be under valued. It is my belief that enrollment will increase as densification occurs. Will the VSB regret closing schools in 10 years time?

Moreover, has there been any discussion around the need for space in schools in light of C19? It is widely accepted that social distancing is required and is perhaps the best deterrent to the virus spreading. Keeping Point Grey and PW running at smaller capacity is potentially the morally correct route to take. I think it would be foolish to think that C19 will ever "just go away" but rather is here to stay.

Many thanks for reading.

Brent Sutter

## **LRFPfeedback**

---

**From:** PAC at Florence Nightingale Elementary  
**Sent:** Wednesday, January 13, 2021 8:23 AM  
**To:** LRFPfeedback  
**Cc:** Solomon Wong; Lyndsay Poaps; Shawna Williams  
**Subject:** Nightingale PAC feedback on LRFP  
**Attachments:** Nightingale PAC Comments on Long Range Facility Plan.docx

Thank you for the opportunity to comment on the Draft LRFP. As well, we have actively participated in consultations by the LRFP team.

The attached document provides Nightingale PAC's comments, summarized as follows:

- Within the catchment area, the LRFP is projecting Nightingale's school aged population as a decrease of 20% through 2030: this is unlikely given the amount of new development and proposed development.
- The inclusion of Nightingale in Year 2 for the 2021/22 capital plan is important; we are however concerned also that a SMP will not address the "poor" Facility Condition Index rating has currently

Alternate scenarios should be considered that deal with 10-20% growth in the catchment area, that will also inform potential actions to "begin limiting out of catchment enrolment at Nightingale to ensure that there is sufficient capacity to accommodate catchment students"

Solomon



**PARENT ADVISORY COUNCIL  
FLORENCE NIGHTINGALE ELEMENTARY SCHOOL**

2740 Guelph Street, Vancouver, BC V5T 3P7

## Comments on Long Range Facility Plan (Jan 11, 2021)

January 13, 2021

### Overall Comments

The directions of the Long Range Facility Plan are important to advance ahead and we appreciated the opportunity to provide feedback via DPAC and directly through consultations. As you know, our PAC community has been eagerly awaiting news of a potential seismic upgrade. The LRFP recognizes our challenge: we continue to be alarmed that “The Ministry did not approve any new projects for the VSB in response to the 2020-2021 submission” (Page 31) and are appreciative of the inclusion of Nightingale in Year 2 for the 2021/22 capital plan – albeit we are anxious about further delays.

One note for the LRFP that we would continue to urge prioritization of Nightingale is the deficit in the Tupper Family of Schools. As noted in future scenarios: “If Nightingale is not advanced for funding through the SMP there will be a safe capacity deficit in the Tupper FOS.”

We are however concerned that the building condition rating is “poor” for Nightingale based on the facility condition index. We note that a seismic upgrade program will not address this:

*Seismic upgrade projects are focussed on improving the safety for building occupants during a seismic event. With a focus on the structural integrity of the building for life-safety, funds are not available within these projects to address existing liabilities related to operational inefficiencies, deferred maintenance, and poor building design.*

Nightingale Elementary has received upgrades for lighting, but we are concerned about other systems that are decaying due to the age of the building. We would urge that while financing is potentially challenging that Nightingale’s poor Facilities Condition Index (FCI) be also addressed to reduce operating/maintenance costs and also that there is the ability to address the modern teaching and learning needs of the school, and associated sustainability benefits.

### Projected Enrolment (Closed Boundary Method) Should Be Reviewed for Nightingale

The forecasting for Nightingale should be revisited. It is not in accordance with the amount of development activity within the catchment area. From the Appendix, Nightingale’s closed boundary method forecast in the LRFP is a decline of 20% in student population from now until 2030:

| Year | 2020 | 2021 | 2022 | 2023 | 2024 | 2025 | 2026 | 2027 | 2028 | 2029 | 2030 |
|------|------|------|------|------|------|------|------|------|------|------|------|
| #    | 247  | 254  | 247  | 240  | 235  | 230  | 214  | 208  | 204  | 200  | 202  |

This assumption is potentially problematic, in view of a large amount of recent development activity within the catchment area.



In recent years, the area around Kingsway, Main and Broadway/12<sup>th</sup> Avenue have significant redevelopment projects realized. A 258-unit 21-storey tower (The Independent) opened in 2018, for example, with students from this building going to Nightingale.

Many more buildings are planned. Multi-family dwellings are also being constructed on a number of vacant or commercial lots. Many are built around incentive programs such as the Moderate Income Rental Housing Pilot Program. Examples are illustrated within Nightingale's catchment area on the following pages as three examples of dwellings where elementary school-aged children will live. Over 500 new residential units are being proposed as rezoning, or under development. Conservatively, if we assume that only 10% of units have elementary-school aged children, there will be at least 50 kids added to the population within the catchment area.

Additionally, there is also residential intensification and infill housing within neighbourhood streets. Subdivision activity converting single-family homes into 2 to 4 dwellings throughout the entire catchment area.

Lastly, the new Broadway/Main subway station is on the boundary of the catchment area and will be expected to drive further residential intensification.

All of these factors will need to be looked at *before* the LRFP fully commits to a position for Nightingale to *"begin limiting out of catchment enrolment at Nightingale to ensure that there is sufficient capacity to accommodate catchment students."*

## Examples



2520 Guelph Street (and Broadway): 70 units, replacing an empty gravel lot



2525 Carolina Street (and Broadway): 65 units



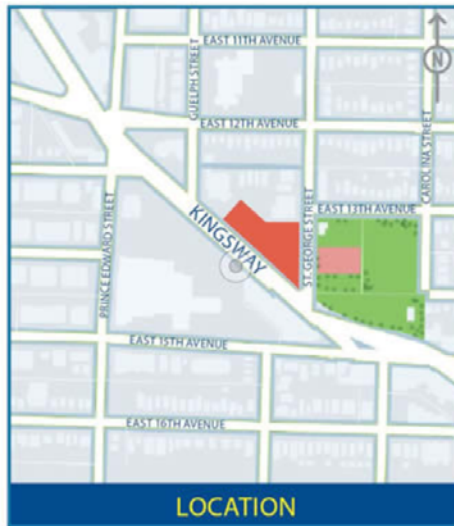
602-604 Kingsway: 6-stories, 80 secured market rental homes under the city's Rental 100 policy, replacing a funeral home and retail.



SE Corner of Fraser/Broadway: 35 units, replacing 1-storey retail.

The largest is up for rezoning shortly, just over one block away from the school:

[Rezoning Application - 445 Kingsway and 2935 St. George Street](#)



215 units, replacing the Hyundai dealership.

## Conclusions

We would urge a recalculation of the forecasting. We may have the conventional wisdom of kids living in single-family homes or duplexes. But increasingly the makeup of the Nightingale Elementary population are in apartments or multi-storey dwellings. Many non-market and market housing options are under construction and we are expecting an increase of 10-20%, not a decrease of 20% through the planning period.

While Nightingale PAC has an interest in seismic mitigation and we would urge all parties to accelerate the completion of program definition and projects, we are also eager to ensure that any solution is also able to address the “poor” status of Nightingale’s FCI rating.

*Prepared by*

Solomon Wong, Seismic Committee Chair / Immediate Past-Chair

*Input/review by*

Chair Shawna Williams

DPAC Rep Lyndsay Poaps

## LRFPfeedback

---

**From:** Robert Ford  
**Sent:** Wednesday, January 13, 2021 8:59 AM  
**To:** LRFPfeedback  
**Cc:** Chair (Vancouver DPAC); Vik Khanna  
**Subject:** Feedback on Hudson Elementary Numbers LRFP

Hi,

I managed to see the following  
<https://docs.google.com/spreadsheets/> (Appendix G, H & I)

The Hudson numbers seem flat out wrong.

It shows 2020 at 378. We have closer to 400, I thought. Also, if we were that far off 400, we would not have a VP, right?

Also the projections showing it going down is insane.

Is this a joke? Why does the seismic plan then have extra classes roughed into design? On what are they basing enrollment projections? Has Squamish Nation and Molson site developments been accounted for?

This seems super flawed.

- Rob.

--

-----  
Robert Ford  
Quokka Systems Consulting

## **LRFFeedback**

---

**From:** Sam Kaplan  
**Sent:** Wednesday, January 13, 2021 9:26 AM  
**To:** LRFFeedback  
**Subject:** Downtown east catchment

Hello,

I just finished reading the Facilities Plan. First of all, increased time for community members to read and reflect upon would be helpful. I have a few concerns after reading.

1) I am a member of the Downtown East Catchment, in Hastings Sunrise neighbourhood and am a foster parent to teenagers, as well as work with youth in this neighbourhood. In the Facilities Plan it names that Templeton has had space for enrollment, however in my experience they have not had space for enrollment, leading to need to cross-enroll at Britannia. Instead of being able to walk to school, they have a further commute and don't have a chance to make friends in the community they are living in.

2). Co-locating alternative programs. Many youth who attend alternative programs need a smaller environment for learning, in order to feel safe enough to attend. Co locating can impact this sense of safety for youth struggling with mental health. Other youth benefit from a program that is satellite due to safety of other concerns (such as the Genesis programs) and I wonder about the impacts for youth in regards to the idea of co-location.

3) Density growth in Hastings Sunrise and Downtown East. The forecast for enrollment is seen as steady with a potential small decrease, however higher density housing is planned and being built in out neighbourhood. As we have witnessed with schools such as Dickens, density growth has lead to more neighbourhood children needing enrollment than there is space. Hastings Sunrise area is growing and many local elementary schools have waitlists/capacity issues already. It is really important for children to be able to attend their neighbourhood schools for accessibility and community building reasons. I a community where many people are financially strapped, community schooling is even more important.

Thank you for your consideration,  
Sam Kaplan

## **LRFPfeedback**

---

**From:** vicky  
**Sent:** Wednesday, January 13, 2021 9:57 AM  
**To:** LRFPfeedback  
**Cc:** dpac  
**Subject:** feedback

Anyone who concerned:

We are parent of student of PG . We don't agree to close PG or other ways to change! We think it is the important thing to student , if their school is closed or they have to accept another school , they will be influenced much by that. And last year, it was a hard time for us, especially for these young men, and we are not sure when it will be ended. So we don't think it is a good time to discuss this problem!

Vicky and Victory

## **LRFPfeedback**

---

**From:** may\_wangyu  
**Sent:** Wednesday, January 13, 2021 9:57 AM  
**To:** LRFPfeedback  
**Cc:** dpac  
**Subject:** Response to PG Renovation Project

Dear Sir/Madam,

Good morning. I' m the parent of a 10th-grade student in PG.

I hear that VSB has restated consultation on PG renovation project. This makes me deeply anxious and disturbed.

The long-term epidemic has already had a great impact on kids. If they have to say goodbye to their familiar teachers, classmates and friends because of the school' s closure, they will be faced with a completely unfamiliar environment again. That' s very bad for students' learning and mental health.

Thank you for your consideration.

Best regards,

Yours sincerely  
May Wang



## **LRFPfeedback**

---

**From:** Shneiderman, Sara  
**Sent:** Wednesday, January 13, 2021 10:35 AM  
**To:** LRFPfeedback  
**Cc:** dpac  
**Subject:** LRFP Parent Feedback

Dear Board Members,

I am writing to provide feedback about the Long Range Facilities Plan. I am specifically concerned about the future of Point Grey Secondary School, as a parent of a current Grade 10 student there, within the Mini School.

I appreciate the need for seismically safe schools, and support that goal. I see that you may be proposing consolidation with Prince of Wales School in a new, seismically safe school, as a means to achieving this. If you decide to pursue this pathway, it will be very important to carry out meaningful consultations with students, parents and staff of both schools, well in advance of any implementation. Also, any such new school should be built before students are moved out of their current school environments. We do not want to see current school communities fractured or placed in short-term accommodation. This would create additional difficulties for current students who are already suffering from pandemic-related disruptions to their education.

Also, I hope you will carefully consider the future of the Mini School district programs hosted by both schools. These provide critical services for families in our community, and if the schools are to be consolidated I hope that as many Mini School places can be made available in the new school.

Thank you very much for your consideration,  
Sara Shneiderman

\*\*\*

[Sara Shneiderman](#)

*Associate Professor*

Department of Anthropology and School of Public Policy & Global Affairs/Institute of Asian Research

University of British Columbia (UBC)

6303 NW Marine Drive

Vancouver BC V6T 1Z1, CANADA

Located on the traditional, ancestral, and unceded territory of the *xwməθkwəy̓əm (Musqueam)* People

## LRFFeedback

---

**From:** Turin, Mark  
**Sent:** Wednesday, January 13, 2021 10:38 AM  
**To:** LRFFeedback  
**Cc:** dpac  
**Subject:** Long Range Facilities Plan (LRF)

**Importance:** High

Dear Members of the Long Range Facilities Plan (LRF) Committee for the VSB,

I am writing to you in my capacity as a parent of a student in the Point Grey Mini School.

I have read with care the Long Range Facilities Plan (LRF) and have a number of questions which I would like you to consider as you move forward.

First, having a younger child currently studying in portables for elementary school (Bayview) and witnessing the disruption that this has caused for teaching and learning, I would kindly ask for an assurance that you will do all that you can to ensure minimal **disruption** as you proceed and guarantee that any **consolidated replacement school is built before** students and teaching staff are moved. For secondary school students – and certainly at this challenging time –the disruption of a temporary move into portables would negatively impact their learning experience.

Second, having read your documentation, I do not believe that you have made a **compelling and clear business case** for a consolidated school. I hope that you will be able to share your thinking with us on this crucial matter, as it strikes me as central aspect in moving forward.

Third, and perhaps most importantly, I would like to ask for an assurance that the **unique and longstanding Mini programs of Point Grey and Prince of Wales will be maintained as distinct opportunities** and not amalgamated / consolidated. These programs offer important enrichment opportunities for highly motivated students through a challenging course of studies in a small and cohesive setting, and I would strongly encourage the committee to ensure that such opportunities are maintained.

Thank you for considering these points in your deliberations,

Yours sincerely

Mark

Mark Turin Ph.D.  
First Nations and Endangered Languages Program (Chair, 2014-2018)  
Institute for Critical Indigenous Studies (Co-Director, 2016-2018)  
Associate Professor, Anthropology

University of British Columbia  
Unceded Musqueam Territory  
156 Buchanan E | 1866 Main Mall | Vancouver, BC | Canada V6T 1Z1  
| twitter: @markturin  
| <http://fnel.arts.ubc.ca> | <http://markturin.arts.ubc.ca>  
<http://www.digitalthimalaya.org> | <http://www.oralliterature.org> |

## LRFPfeedback

---

**From:** Cissy Pau >  
**Sent:** Wednesday, January 13, 2021 11:17 AM  
**To:** LRFPfeedback  
**Cc:** chairperson; past-chairperson Carrie Sleep; Carmen Cho; Joanne Denny  
**Subject:** Feedback from Quilchena Elementary PAC re: LRFP

We are writing on behalf of the Quilchena Elementary PAC to provide feedback related to the VSB's Draft 2020 Long-Range Facilities Plan.

We read with great concern and alarm that Quilchena has not been prioritized for seismic mitigation in the latest capital plan. In the 2015/2016 Capital Plan, Quilchena had a district ranking of 27th (Year 1) of the capital plan, though not supported for seismic mitigation. In the 2019/2020 draft Capital Plan, Quilchena was project priority #30 for consideration in year 4 of the capital plan.

In an email from the VSB Director of Instruction on July 10, 2018, we were advised that "*Quilchena meets all the criteria noted in the above 2017 Long Range Facilities Plan (LRFP) to be recommended for advancement as a seismic mitigation project. The current consideration for Quilchena is to use David Lloyd George Elementary as a temporary accommodation site following the completion of Livingstone Elementary on the priority list above and Carr Elementary which will require an addition to their school site for greater capacity.*" (Email correspondence is attached below.)

You can imagine our surprise and disappointment to find that Quilchena is no longer included in the 2020 LRFP, while other schools that had previously been prioritized after Quilchena have now been prioritized ahead of our school.

While we appreciate that many schools in Vancouver require seismic upgrading and that there are many factors that need to be considered in making very difficult decisions, we would like to provide the following feedback for your re-consideration of Quilchena's seismic mitigation priority:

- Quilchena is the **only** elementary school in the Southwest and UBC/Vancouver West Regions that is operating at a capacity between 120% - 140% with a **stable** enrolment forecast. Quilchena's building condition is rated as poor with a 0.57 FCI and has an H1 seismic risk rating. From a purely objective perspective, these factors alone appear to be critical considerations that justify placing higher priority on upgrading Quilchena. Given that top priorities for inclusion in the Capital Plan are a high seismic risk factor, geographic location and enrolment trends, it doesn't make sense that Quilchena's situation does not justify a business case to seismically upgrade the school.
- We do not understand how Quilchena and Southlands can be considered in the same FOS when they are so geographically distanced. Southlands is clear on the other side of the region and, in fact, seems like it should be part of the UBC/Vancouver West Region. To say that there it will be "*challenging for the Ministry to prioritize funding to seismically upgrade both Southlands and Quilchena due to the weak business case for either of these projects*" assumes that Southlands and Quilchena should be considered together when, in actuality, their grouping together is arbitrary. While we recognize that both Southlands and Quilchena are H1 schools in need of seismic mitigation, and assuming they remain in the same FOS, we don't understand how Southlands has been added to the 5 year Capital Plan while Quilchena has been removed, despite Southlands' enrolment numbers expected to decline to almost half their existing enrolment by 2029.

- While it is anticipated that there may be surplus seismically safe capacity in the Point Grey FOS in the future for students, the schools with those safe seats are not physically close to Quilchena. The LRFP shows that Kerrisdale, Maple Grove and Kitchener may have future capacity. This seems to imply that Quilchena students could/would be relocated to these various schools at some point in the next few years, thereby resulting in a closure of Quilchena. This would be an unacceptable outcome for Quilchena families and would be fervently opposed.
- Maintaining Quilchena's robust French Immersion programming is a priority for the school community. In fact, this school year, an additional division of French Immersion Kindergarten students was enrolled. Encouraging new students to attend Quilchena but not making efforts to provide seismically safe spaces for those students at the school is incomprehensible and negligent.

The LRFP also mentions possible school consolidations to replace school buildings with modernized larger capacity schools in order to accommodate students from multiple school catchments. Conceptually, this may appear more efficient, but from a practical perspective, we have the following concerns:

- Schools are the heart of the neighbourhood and provide a sense of community to local residents. Maintaining smaller, localized schools allows for stronger community building and more connected students. A larger school, potentially significantly farther away from where students live would tear the community apart. Schools should be located where students live, not 30 minutes away by car.
- Quilchena is a small school with approximately 300 students with 7 English and 8 French divisions. With essentially 1 class of each grade in each of French and English, the students and school community are tight-knit. The small school size allows students and families to get to know one another, and allows for great familiarity between students, teachers and the administration. Quilchena students do not get "lost in the shuffle" as they may in a larger school environment and, as parents, we are comforted in knowing that teachers and other parents know, and are looking out for, our kids. A larger school would not allow for such connection and familiarity.
- If a priority for the VSB is transit accessibility, shorter commute times and walkability to schools, a larger school farther away does not allow for this goal to be achieved. For example, if a business case cannot be made to the Ministry to support seismic mitigation to both Southlands and Quilchena, and one larger school is built on the Southlands grounds to accommodate students from both schools, this would not only create significant logistical difficulties for parents but would also increase commute times. It would certainly not be within walking distance for many families, nor would it be easily accessible via transit. The central location of Quilchena, easily accessible by local families via car, bike, bus or on foot, allows for better community and local access.
- One of the most beloved aspects at Quilchena is SPG Out of School Society, our on-site before and after school care program. Operating out of a multi-purpose space at Quilchena since 1977, SPG provides much-needed child care for approximately 100 students. From 7:30 am - 9:00 am each morning and from 3:00 pm - 6:00 pm in the afternoons, as well as on Professional Days and full-time during Spring break and in the Summer, enrolled students have the ability to participate in SPG's exceptional programs, partake in their breakfast and after-school snack program, and receive safe and reliable childcare. Any future considerations for Quilchena must take into account that SPG is an integral part of our school community and essential for the health and well-being of our children and their parents. We would hate for this sense of caring to get lost among a larger school with many more students.

We are also disappointed that greater consultation has not occurred between the VSB and Quilchena parents. For several years now, we have reached out to VSB administration, our School Trustee, our MLA and the Ministry of Education to ensure that the voice of Quilchena parents is heard. We have asked for and offered to participate in any consultation necessary as it relates to the future of Quilchena, with little to no response. To find out that Quilchena is

no longer prioritized for seismic mitigation is of significant concern. The VSB has indicated that transparency and community consultation is a high priority. If this remains the case, we would very much appreciate greater consultation on plans and issues that affect Quilchena families and the safety of our children.

We appreciate the opportunity to share our feedback. We look forward to participating with the VSB on any future discussions related to our school.

Sincerely,

Cissy Pau & Joanne Denny  
Quilchena PAC Immediate Past Co-Chairs

Begin forwarded message:

**From:** Cissy Pau  
**Subject:** Feedback on LRFP from Quilchena PAC  
**Date:** March 13, 2019 at 11:00:21 PM PDT  
**To:** [LRFP@vsb.bc.ca](mailto:LRFP@vsb.bc.ca)  
**Cc:** "[chairperson](#)" Carrie Sleep

---

On behalf of the parents of Quilchena Elementary, we would like to provide our feedback on the VSB's Long Range Facilities Plan.

Below is a copy of correspondence the Quilchena PAC has had with Pedro da Silva regarding seismic mitigation for Quilchena Elementary. In that email, we have a number of questions where we seek further clarification regarding the future of Quilchena's facility.

In short, we read the LRFP with great interest. We appreciate that there are many challenging and conflicting issues that need to be taken into consideration when guiding facilities planning in the District.

While reference to Quilchena was minimal in the LRFP, we want to ensure that Quilchena is not overlooked in the planning process. We want a safe school for our children, teachers, staff and visitors. We are eager to see our school replaced as soon as possible as part of the seismic mitigation process. Our interest is to expedite the feasibility study for Quilchena so that our options are known sooner than later.

As parents, we want to be active, resourceful and respectful participants in any decision-making that impacts Quilchena families and our school community. We wish to be involved as early as possible in any consultation process related to Quilchena's future, whether related to seismic mitigation, French Immersion program changes, or any other significant changes. We would like to make our opinions, suggestions and recommendations known early in the decision-making process in order to ensure parents' priorities are taken into account. We feel that early involvement will minimize disruption to our school community and will mitigate against public criticism and anxiety.

We sincerely hope that further consultation will be undertaken with Quilchena parents as the LRFP progresses. We look forward to participating together in this process.

Sincerely,  
Cissy Pau & Joanne Denny  
Quilchena PAC Co-Chairs

Begin forwarded message:

**From:** Cissy Pau  
**Subject:** Fwd: Quilchena PAC Questions on Seismic Mitigation & Long-Range Facilities Plan  
**Date:** March 13, 2019 at 10:22:00 PM PDT  
**To:** Pedro da Silva  
**Cc:** Jim Meschino, [carmen.cho](#), Carrie Sleep, "[chairperson](#)"

Hi Pedro,

On behalf of the parents of Quilchena Elementary, we would like to take this opportunity to share our thoughts and questions with you related to the draft long-range facilities plan (LRFP) released on February 22, 2019 and to follow-up on your prior correspondence.

We read the LRFP with great interest. As you may recall from the email below, the parents at Quilchena Elementary are anxious to see our school replaced as part of the seismic mitigation process. It was explained in your email that Quilchena is under consideration for seismic upgrading after David Lloyd George, Livingstone Elementary and Carr Elementary, with the seismic upgrade process to begin no earlier than 2025/26. The 5-Year Capital Plan in the LRFP also shows that Quilchena is project number 30 for Seismic Mitigation Projects, which appears to be at the end of year 4 of the plan.

In reviewing the draft LRFP, we appreciate that much attention will need to be spent addressing the issue of schools with low enrolment and enrolment decline, as it relates to seismic mitigation. As we understand from the LRFP, Quilchena has not been identified as such a school and, in fact, has current capacity utilization at 123%, with projected capacity utilization of 108% in 2022 and 119% in 2027. In addition to this expected stable enrolment, we are identified as a school with an H1 seismic risk rating and a poor Facilities Conditions Index of 0.59.

With all those factors combined, we have the following questions:

1. What is the possibility of expediting an application to the Ministry of Education for funding approval for a feasibility study for Quilchena to help determine our seismic mitigation options?

2. If seismic replacement can occur on the current school site without needing to relocate Quilchena students to a temporary location at David Lloyd George during construction, is there a potential to start Quilchena's seismic planning process earlier than planned since we would not require the swing site to be available?
3. Does the fact that Quilchena is not on the list of schools with low capacity utilization and projected low enrolment allow us any higher priority in the seismic mitigation program? We note that there are 7 schools on the Seismic Mitigation 5 Year Capital Plan that are higher priority than Quilchena but are designated as low enrolment with projected enrolment decline.

As a PAC, we are eager to ensure a safe school for our over 300 students, teachers, staff and visitors as soon as possible. We are interested in participating in any consultation required, as early as possible, as Quilchena undergoes evaluation, potential French Immersion program changes, feasibility studies and other processes which we are sure will take place over the next months and years. We remain open and willing to discuss the interests of Quilchena parents, as it relates to the interests of the VSB, the seismic mitigation process and the Ministry of Education, at any time. With our advanced and active involvement in the decision-making and consultation process, we would like to avoid disruption, aggravation and public unrest for our school and the VSB.

We have a wonderful school community. We benefit from the diversity and educational opportunities that come with both English and French Immersion programming. We also have a truly exceptional onsite before and after school care program which needs to be taken into consideration as they provide much-needed care for almost 100 students (about 1/3 of the school population) from close to 70 Quilchena families. As parents, we would like to be involved early in any VSB decision making that will affect Quilchena families in order to minimize any negative impact on our school community.

We look forward to hearing from you.

Sincerely,

Cissy Pau & Joanne Denny  
Quilchena PAC Co-Chairs

**From:** Carrie Sleep  
**Sent:** August 13, 2018 2:27 PM  
**To:** Estrellita Gonzalez  
**Subject:** RE: Quilchena PAC Responses

Hi Estrellita,  
I will share this information through the school newsletter and at the PAC meetings.  
Hope you are enjoying your summer,  
Carrie

---

**From:** Estrellita Gonzalez  
**Sent:** Tuesday, July 10, 2018 11:13 AM  
**To:** Pedro da Silva ; [Estrellita Gonzalez](#)  
**Cc:** Suzanne Hoffman (Superintendent), Kathy O'Sullivan; Carrie Sleep; Jim Meschino  
**Subject:** Re: [Quilchena PAC Responses](#)

Thanks for the update Pedro. Whom and how will this information be shared with the school community at Quilchena?

Best

Estrellita

Get [Outlook for iOS](#)

---

**From:** Pedro da Silva  
**Sent:** Tuesday, July 10, 2018 9:49:11 AM  
**To:** Estrellita Gonzalez  
**Cc:** Suzanne Hoffman (Superintendent); Kathy O'Sullivan; Carrie Sleep; Jim Meschino  
**Subject:** Quilchena PAC Responses

Hi Estrellita,

In consultation with Jim Meschino – Director of Facilities and Planning and the Vancouver Project Office, and Kathy O'Sullivan - District Principal of Field Services, the purpose of this letter is to address the questions raised by the Quilchena PAC.

### **Prioritized Schools**

The Vancouver School Board requested as per the May 24, 2016 Long Range Facilities Plan (LRFP), that the following factors be considered when recommending the school priority for the Seismic Mitigation projects: high seismic risk school, planned capacity utilization will be approximately 95% or greater, high deferred maintenance, temporary accommodation will not be needed for the school community, school will not be identified for closure, support a plan to have sufficient schools usable after a major earthquake in all areas of the district and work has already begun on a Project Definition Report for the school.

Based on the above factors, the Board requested **VSB Planning and Facilities** staff to provide immediate priority to the following Seismic Mitigation Program (SMP) projects: Cavell Elementary,



Wolf Elementary, Prince of Wales Secondary, Tennyson Elementary, Maple Grove Elementary, Weir Elementary, Jamieson Elementary, David Thompson Secondary, Bayview Elementary, Point Grey Secondary, Hamber Secondary, Killarney Secondary, David Lloyd George Elementary, Kingsford Smith Elementary, Livingstone Elementary, Hudson Elementary, False Creek Elementary, and Fleming Elementary.

In addition to the above schools, the VSB also considered advancing schools where enrolment projections indicate that the school may need a building addition to increase capacity at a given school. The school addition could be coordinated and completed at the same time as the seismic upgrade. Also taken into consideration is that availability of temporary accommodation space during construction for the school community. Currently we only have three temporary accommodations for elementary schools: Queen Elizabeth/ QE Annex (two sites for one school), South Hill and Champlain and MacCorkindale (two sites for one school). With the suspension of school closures, VSB and VPO staff have had to consider alternative options for temporary accommodations for school communities which has led to reordering of schools to be completed. Further investigation with swing sites include elementary schools being integrated with secondary schools.

### **Quilchena's Seismic Rating**

Quilchena meets all the criteria noted in the above 2017 Long Range Facilities Plan (LRFP) to be recommended for advancement as a seismic mitigation project. The current consideration for Quilchena is to use David Lloyd George Elementary as a temporary accommodation site following the completion of Livingstone Elementary on the priority list above and Carr Elementary which will require an addition to their school site for greater capacity.

### **Timeline**

It is anticipated that Quilchena can commence seismic upgrade as early as 2025/2026 and to be completed by 2027/2028. This will depend on Ministry approval timelines, temporary accommodation space availability and city approvals. The VSB does not currently have Ministry approval to proceed with a feasibility study for Quilchena school seismic upgrade.

### **Upgrading Expedition for Quilchena**

The Ministry of Education and the VSB have expressed a desire to accelerate the seismic mitigation program however there still remains a number of schools in Vancouver to complete. Through accelerated approvals to proceed to the feasibility study phase, subsequent funding approvals by the Ministry of Education are needed for completion. The VPO and the Steering Committee was established three years ago to expedite the seismic mitigation program in Vancouver, and to secure enough safe seats for each student by 2030.

### **School Ranking List**

Each year school districts are required to submit a Capital Plan to the Ministry. This plan drives the seismic mitigation program for that given year and the Vancouver Project Office follows the Capital Plan submitted by the Vancouver School Board. Schools have been grouped in seismic priority, and the anticipate year to be done according to the criteria listed above. For example, five schools may be listed for year one and only four may be schools approved with Ministry funding with a signed project agreement. Schools that cannot be funded for that given year move forward to the next year's list. The Ministry and VSB review each year's school list and reprioritizing takes place.

If you have any further inquiries, please don't hesitate to contact me.

Sincerely,

Pedro da Silva  
Director of Instruction, School Services  
Superintendent's Office  
Vancouver School Board  
1580 West Broadway  
Vancouver BC

II Please consider the environment before printing this e-mail notice

This e-mail is intended only for the person to whom it is addressed (the "addressee") and may contain confidential and/or privileged material. Any review, retransmission, dissemination or other use that a person other than the addressee makes of this communication is prohibited and any reliance or decisions made based on it, are the responsibility of such person. We accept no responsibility for any loss or damages suffered by any person other than the addressee as a result of decisions made or actions taken based on this communication or otherwise. If you received this in error, please contact the sender and destroy all copies of this e-mail.

## **LRFPfeedback**

---

**From:** Drew Stewart  
**Sent:** Wednesday, January 13, 2021 11:18 AM  
**To:** LRFPfeedback  
**Cc:** Krista Sigurdson; Carla Frenkel  
**Subject:** Feedback to Draft LRFP - Lord Strathcona Elementary PAC  
**Attachments:** Response to LRFP - Lord Strathcona PAC - January 13, 2021.pdf

Dear Trustees and Staff, !

Thank you for all your time and effort in creating the draft LRFP. Please accept the attached letter as official feedback from the Lord Strathcona Elementary School PAC to the 2020 Draft Long Range Facilities Plan. Please feel free to make the attached document open to the public. !

Thank you for your time and consideration in reading this document. Please do not hesitate to contact us should you have any questions or concerns.

Kindly,

Krista Sigurdson, Chair, Strathcona PAC

Drew Stewart, Co-Chair, Safe School Grounds Committee

Carla Frenkel, Co-Chair, Safe School Grounds Committee

January 13th, 2021

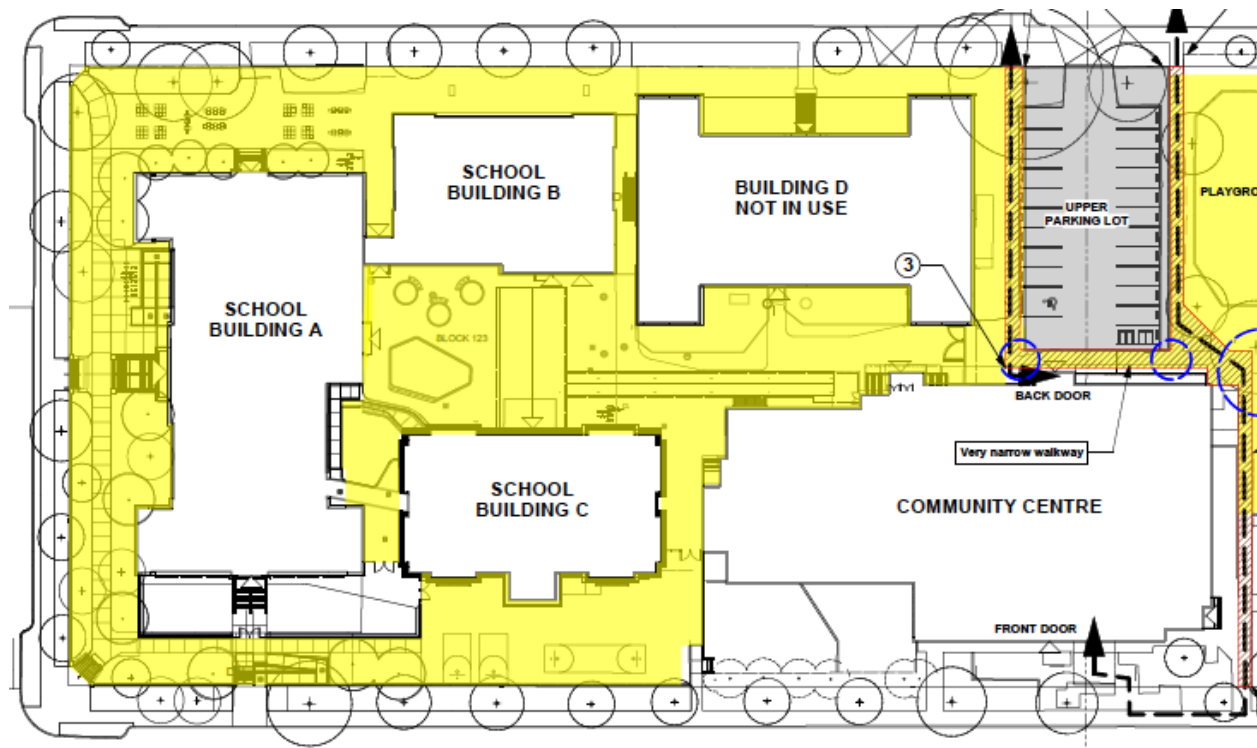
Dear Allan Wong, VSB Trustees and the Facilities Planning Committee,

Please accept this letter as official feedback from Strathcona Elementary PAC to the 2020 Draft Long Range Facilities Plan, which is being considered at the January 13, 2021 Facilities Planning Meeting.

Current safety issues at Lord Strathcona Elementary regarding school grounds and buildings include:

**SEISMICALLY UNSAFE BUILDING IN DISREPAIR**

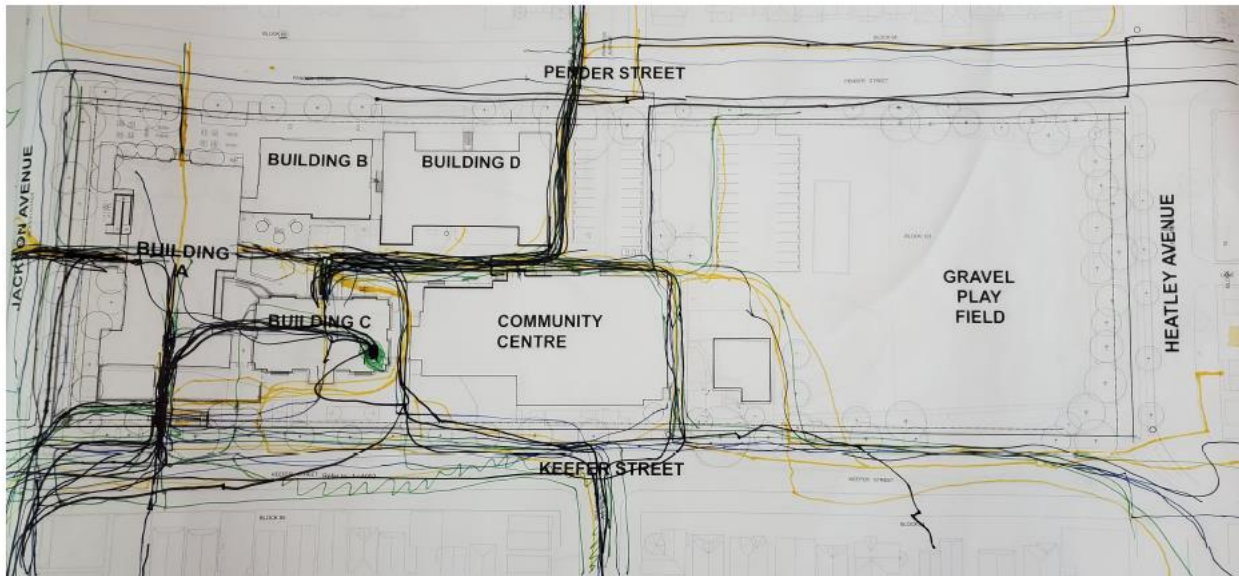
Through 2016 and 2017, Buildings A, B and C received seismic upgrading at Lord Strathcona Elementary. Tens of millions of dollars were spent to protect children from earthquakes, yet **Building D** remains as a non-retrofit, abandoned and boarded-up brick building, which VSB Trustees described unanimously in an October 26th motion as a “seismically unsafe building in disrepair”.



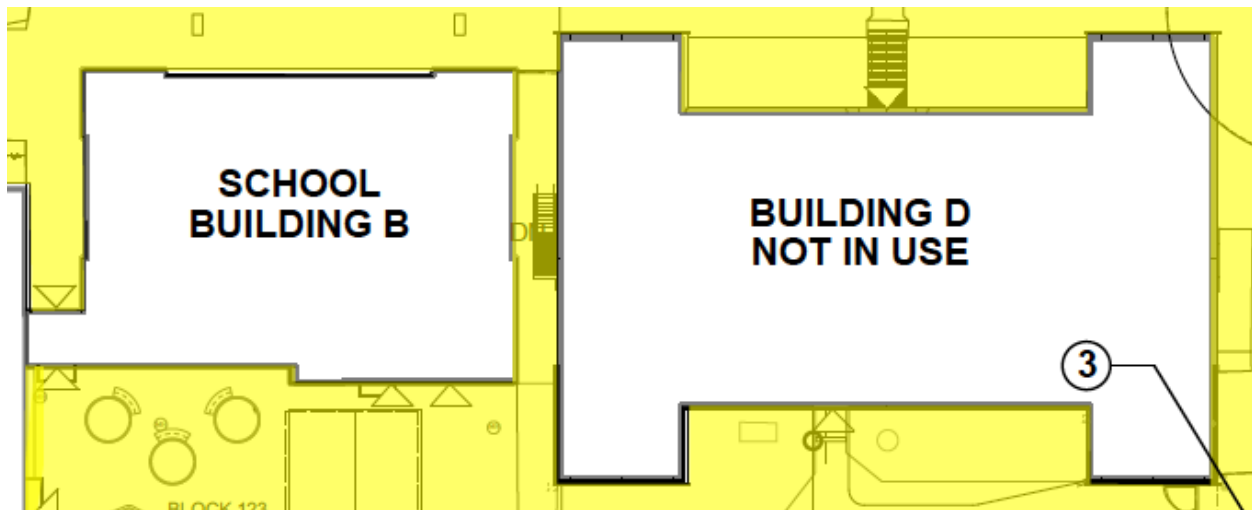
This **dangerous building** continues to create a multitude of safety issues for the school and the broader community. This building needs to be taken down or seismically upgraded due to the following reasons:

1. **Existential Threat:** It will kill children in the event of an earthquake. Building D is in the middle of the busiest outdoor parts of the school grounds. Last year our PAC hired a landscape architect to engage in community consultation; hosting workshops involving every student in the school and open houses to engage parents, staff and community. This resulted in 'heat maps' showing people's movement through the school grounds. This

community research clearly highlights people's movements day-in day-out in close proximity to the seismically unsafe Building D.



**2. Hinders Emergency Operations.** School Building B, which is beside Building D, was retrofitted with an independent electric generator to be used for emergency management in the case of a disaster. Building D impedes access and use of this Building B for its intended use for emergency ops in the case of a disaster, therefore unnecessarily increasing risk to the population of the entire neighbourhood by negating the usefulness of a needed public good in a time of crisis.



**3. Occupation.** Abandoned Building D invites potentially dangerous police action as an unused building, a VPD police SWAT team raid on April 19, 2020 removed 14 people. Leaving the building in its current state unnecessarily increases risk to VSB students & children.



3. **Plywood Windows = No Heritage Value.** As a landlord, VSB is not compliant with Heritage A Bylaws and its specific Standards of Maintenance. A boarded-up building nullifies the 'Heritage value' that was supposed to be kept by not tearing it down. The net effect is no heritage value + existential threats to the student and neighbourhood population.



4. **Opportunity Cost - No Green Space:** Building takes up needed potential green space. The children of Strathcona have lost 90% of their green space for years, perhaps decades, due to

the situations at both Oppenheimer and Strathcona Parks. The children of Strathcona have also lost Baseball Diamonds(x3), Basketball Courts(x2), Dogs Off-Leash Areas(x1), Field Houses(x2), Playgrounds(x3), Running Tracks(x1), Skateboard Parks(x1), Soccer Fields(x5), Tennis Courts(x4), Washrooms(x2), Climbing Wall (x1), Horseshoe Pitch (x1), Picnic Sites (x3), Patio Spaces and Seating Areas (x8)



**5. Opportunity Cost - No Childcare Space:** Historically, parts of Building D were used as before- and after-school childcare space through the attached Strathcona Community Centre and its Strathcona Childcare Centre (SCC). Currently, SCC looks after 175 children - representing 39% of the total school population of 448. Of these SCC children, 64% of their families depend on a financial subsidy to pay for childcare. This is a vital service in the last remaining truly mixed-income neighbourhood in the City, where the vast majority of parents are working folks who desperately need childcare. There is a waitlist of 284 children. This pressure on childcare spaces will continue - VSBs current plan through the draft Long-Range Facilities Plan is to

- Continue you to use Strathcona as an overflow site to accommodate waitlisted students placed by the District from King George FOS
- Continue to monitor enrolment at Strathcona to ensure that catchment students can continue to be accommodated

This school year started with an unprecedented 4 and a half K classes (English) and 1 K class (French). With student population pushing eastward due to lack of school space in Downtown/Yaletown/Olympic Village, this trend of increasing numbers of K students will continue, which in turn will demand an increase in childcare spaces. If Building D cannot be removed, then it should, at least, be seismically upgraded to to keep kids safe and give childcare to a community in need.

**6. A Very Public Message.** The condition of Building D sends a very public message that VSB values old brick buildings over child-student and neighbourhood safety. We encourage you to





see this as a very real opportunity to advocate passionately to the Heritage Commission, telling them to work toward putting children and communities first. You can and should do this. Please follow through on the October 26th, 2020 VSB Board motion:

*That the Board reach out to the City of Vancouver Heritage Commission to initiate a conversation about options for a Heritage A school building which is a seismically unsafe building in disrepair.*

### **PINCH POINTS AND FENCING**

Strathcona Elementary is now completely fenced-in during non-school hours making it the only inner-city American-style school in the province with complete 'lock down' exterior fencing. While, in the short-term, this fencing has reduced the amount of needles, partying, human excrement, garbage and camping found on the grounds - there are a many unintended consequences to this VSB endorsed intervention.

1. **Pinch Points Have Been Exasperated.** 'Pinch points' concentrate students, multiple times a day, through tight outdoor corridors, blocking escape routes in the event of an earthquake/fire/shooting event etc and are unacceptable during this COVID pandemic. The tightest pinch point measures only 1080 mm wide and funnels *all* children from school buildings to playing fields *everyday*. This is in contravention of BC Building Code, which states that "Exterior walks that form part of an accessible path of travel shall have a slip-resistant, continuous and even surface, be not less than 1 500 mm wide". The placement of dumpsters have hit running students' heads due to open lids crossing the tight passage.




2. **No Access to Disaster Relief.** Disaster Support Hubs are located at 25 sites throughout Vancouver to serve as public areas where citizens can gather following an earthquake or other natural disaster to share information and resources. VSB property at Strathcona Elementary is a Vancouver Emergency Management Agency (VEMA) designated Disaster Hub. This vital community resource is now fenced in on weekends, holidays, before and after school, summer break, winter break and spring break - that is, a majority of the time in

a year. The other Disaster Hub for the neighbourhood, Oppenheimer Park, is also fenced off. See: <https://vancouver.ca/files/cov/disaster-support-hubs-map.pdf>

## DISASTER SUPPORT HUB LOCATIONS

To learn more about what you can do to prepare for emergencies, visit: [vancouver.ca/beprepared](https://vancouver.ca/beprepared)



LOCATIONS WILL FEATURE THIS SIGN



Disaster Support Hubs are located at 25 sites throughout Vancouver to serve as public areas where citizens can gather following an earthquake or other natural disaster to share information and resources.



|   |  |
|---|--|
| <p><b>1</b> Britannia Community Services Centre<br/>1661 Napier Street</p> <p><b>2</b> Champlain Heights Community Centre<br/>3350 Maquinna Drive</p> <p><b>3</b> Coal Harbour Community Centre<br/>480 Broughton Street</p> <p><b>4</b> Creekside Community Recreation Centre<br/>1 Athletes Way</p> <p><b>5</b> Douglas Park Community Centre<br/>801 West 22nd Avenue</p> <p><b>6</b> Dunbar Community Centre<br/>4747 Dunbar Street</p> <p><b>7</b> False Creek Community Centre<br/>1318 Cartwright Street</p> | <p><b>14</b> Kitsilano War Memorial Community Centre<br/>2690 Larch Street</p> <p><b>15</b> Marpole-Oakridge Community Centre<br/>990 West 59th Avenue</p> <p><b>16</b> Mount Pleasant Community Centre<br/>1 Kingsway</p> <p><b>17</b> Oppenheimer Park Community Centre<br/>400 Powell Street</p> <p><b>18</b> Renfrew Park Community Centre<br/>2929 East 22nd Avenue</p> <p><b>19</b> Roundhouse Community Arts and Recreation Centre<br/>181 Roundhouse Mews</p> <p><b>20</b> Strathcona Community Centre<br/>601 Keefer Street</p> |
|---|--|

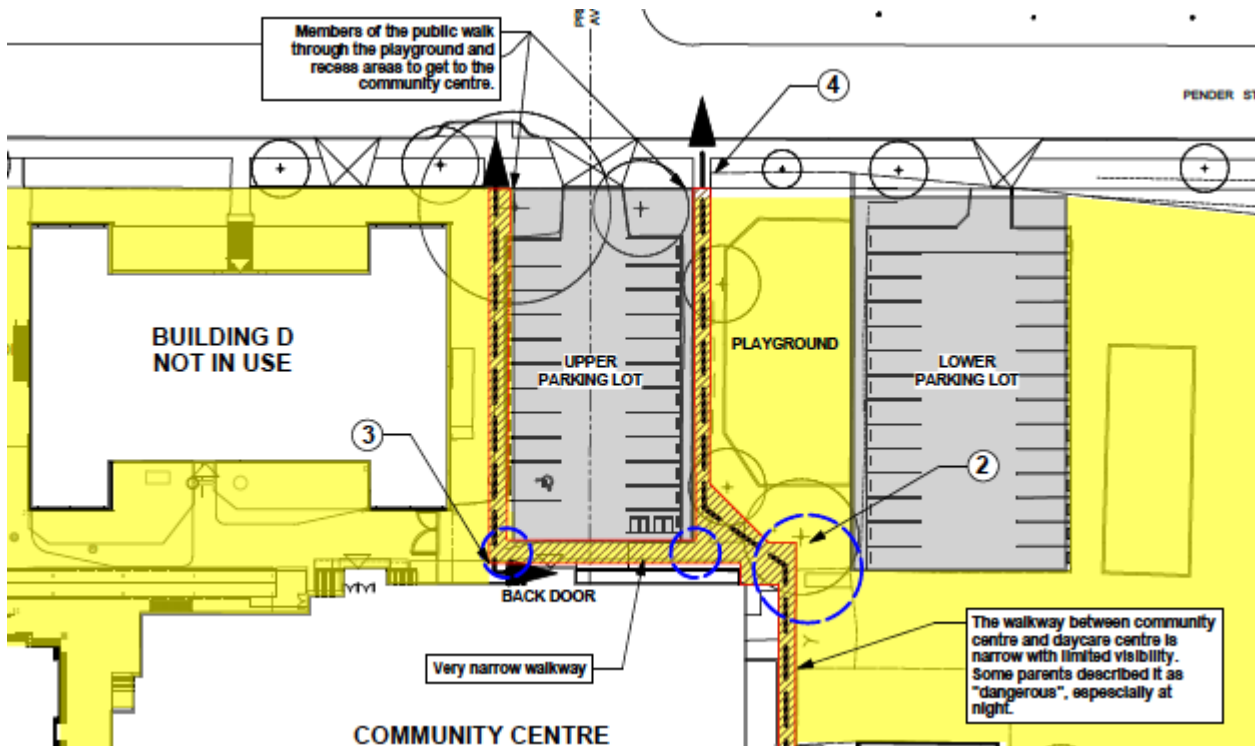
3. **No Access to Emergency Containers.** CoV and VSB emergency containers, which provide local citizens, emergency crews and VSB staff and student with vital supplies during a disaster are also now locked behind fencing. They are also surrounded by mud. Note the proximity of the abandoned and seismically unsafe Building D in the background.



4. **Perimeter Fencing as an Opportunity:** Trustees chose to put a continuous perimeter fence around the school, making it the only such school in the district. This 'fenced in' outcome creates an opportunity to build safer and better school grounds within this relatively safer and protected 'fenced in' zone. That is, capital investments in Strathcona can be better guaranteed to not be wrecked due to vandalism and misuse due to external traffic.

## RECONFIGURE AND DECREASE ONSITE PARKING

1. Increase playground and green space at Strathcona through removal of overabundance of staff parking space.
2. Conflict of parking lots and play space surrounds play structure with cars, creating aforementioned 'pinch points' due to site plans that prioritize car culture over student safety.
3. Parking lots physically divide and separate students from existing green space and sports fields.
4. Overabundance of parking space takes the place of potential green space that could otherwise be used. Unused street parking exists for staff parking.



## PARTNERSHIPS

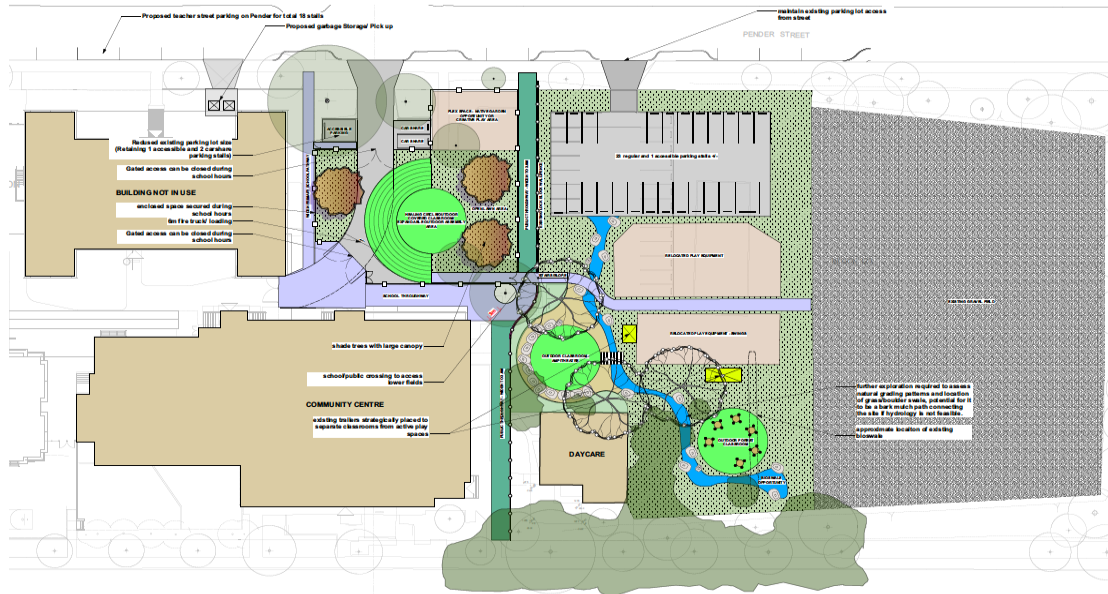
Strathcona PAC is partnering with Strathcona Community Center (SCC) in order to improve safety on school and centre buildings and grounds. SCC has operated as tenant on VSB property at Strathcona Elementary for nearly 50 years, since 1972. SCC operates Strathcona Childcare Centre, which cares for 175 VSB students. In addition, the SCC operates long-standing food security programs which feed VSB students during the COVID pandemic:

- Breakfast: The Strathcona Community Centre Food Security Program provides the school with takeaway breakfasts delivered to the school each morning for students to eat in their classrooms.
- Recess: Students are encouraged to bring their own recess snack each day. However, food is provided to any student in need.
- Lunch: The school provides a takeaway lunch for students in need each day, that they eat in their classrooms.

Together, we have put together a four-phase plan:

## PHASE 1

Last year our PAC hired a landscape architect to engage in community consultation; hosting workshops involving every student in the school and open houses to engage parents, staff and community. This outreach has resulted in draft plans for the school.



## PHASE 2

An anonymous donation of \$15,000 to the PAC to help the school respond to the COVID pandemic has been distributed through VESTA to help improve outdoor resources and learning on Strathcona school grounds and keep children safe.

## PHASE 3

The PAC is working in partnership with Strathcona Community Centre (SCC), VESTA and Principle Eng in order to improve the condition of the main thoroughfare which leads children both from the school and childcare areas to playgrounds and the gravel sport field. This area is an unacceptable muddy cesspool.



The grounds situation is implicitly inequitable in that the poorest children in the District are expected to walk through this disgusting muck in order to access play structures and fields. Many of these children do not own boots or proper jackets. This physical dissuasion against play and healthy activity toward the district's poorest children is palpable and real. SCC is offering \$25,000 of grant funds it received from the Ministry of Children & Family Development to professionally improve drainage through this area. That is, VSB's tenant (SCC) is pouring scarce capital funds into the landlord's (VSB) property so that the most marginalized children in the VSB do not have to walk through a sea of mud in order to access play facilities and healthy activity. This is not acceptable. VESTA is working with VSB Facilities to put in place mobile structures (\$44,000) for outdoor learning in the same general area. Phase 3 has a hard deadline for completion by June 30, 2021.

#### **PHASE 4**

This Phase aims to work with VSB to deal with the major safety issues of:

1. Building D being seismically unsafe and in disrepair, which unnecessarily places VSB children and the greater community at harm while simultaneously costing the community green space or childcare space.
2. Pinch points on school ground pathways that, in contravention of building codes, put children at harm.
3. An overabundance of parking spots that divide and limit access to play spaces, create pinch points, and simultaneously cost the community needed green space.
4. Exterior fencing which overrides and nullifies the effectiveness of Vancouver Emergency Management Agency plans to keep this community safe.

The PAC, in partnership with SCC and VESTA, have brought together ideas gleaned through public community consultation, inter-organizational planning and discussion and consultation with the landscape design firm of Prospect & Refuge. We would like the opportunity to formally present our ideas and recommendations to the VSB Board as an official Delegation and Agenda Item at an upcoming meeting.

Thank you for your time and consideration in reading this document. Please do not hesitate to contact us should you have any questions or concerns.

Kindly,

Krista Sigurdson, Chair, Strathcona PAC

Drew Stewart, Co-Chair, Safe School Grounds Committee

Carla Frenkel, Co-Chair, Safe School Grounds Committee

## **LRFPfeedback**

---

**From:** Melanie Antweiler  
**Sent:** Wednesday, January 13, 2021 11:53 AM  
**To:** LRFPfeedback  
**Subject:** LRFP Feedback

To the Trustees of SD 39:

I am writing with respect to the Long Term Facilities Plan (LRFP), which is dated January 11, 2021, and which was posted to your website on January 12, 2021.

At least, I would like to write with respect to the LRFP itself, but cannot provide any meaningful feedback as the deadline for comments was set for noon on January 13, 2021. As a busy parent, I need more than a day to read this important document, assess the data and proposals therein, and prepare and provide meaningful feedback.

**This is not meaningful public consultation.**

I have had more than enough experience to understand how VSB works, including through my time as an executive member of the Vancouver DPAC, but the haphazard process for this roadmap to the future of Vancouver's public schools is particularly shocking. The "consultations" in the autumn were minimal, with inadequate opportunities for participation and little communication as to how one could participate. This rushed approach to seek comments on the LRFP is exclusionary. At best, this is window dressing, a sham of an effective and meaningful public consultation. This rush is disrespectful of those who will be impacted by decisions arising from the LRFP and who deserve to be consulted.

I have two children in VSB schools, one each at Southlands Elementary and Point Grey Secondary. Both of these schools have H1 seismic ratings. From the brief scan I've been able to give the document, my children are now and will continue to be affected by the proposals within the LRFP.

I urge the Trustees to ensure that your consultations on this matter are valid, respectful, and worthwhile. To do so will necessitate a pause in your rushed timeline and an open dialogue without foregone conclusions.

Respectfully,  
Melanie Antweiler, Ph.D.

## **LRFPfeedback**

---

**From:** jen w  
**Sent:** Wednesday, January 13, 2021 11:56 AM  
**To:** LRFPfeedback  
**Subject:** school plan

Hello, I am one of the student's mother in Point gray, regarding the future school plan, I voted for Scenario 1

- Point Grey has not advanced in the SMP, and is not prioritized n the 2021-22 5-year capital plan request
- Prince of Wales has not been prioritized in the 2021-22 5-year capital plan request•It may be challenging for the Ministry to prioritize funding to seismically upgrade both Point Grey and Prince of Wales secondary schools due to the weak business case for either of these projects.
- Most students attending a secondary school in the Southwest Region of the District will not have access to a seismically safe school for many years.

### **If we have to go to Scenario 2,**

I request : 1 only minimal disruption that any consolidated replacement school will be built before anyone is moved.

2 we need know more business case for consolidated school.

3 we do not want lose new people because this consolidation reason.

Sincely,

Chunli Chen

## **LRFPfeedback**

---

**From:** Southlands DPAC Rep  
**Sent:** Wednesday, January 13, 2021 11:56 AM  
**To:** LRFPfeedback  
**Cc:** Vik Khanna (Vancouver DPAC); DPAC Chair; Carmen Cho; Janet Fraser; Allan Wong; Estrellita Gonzalez  
**Subject:** Draft 2020 LRFP and the Southwest Region

Please see below feedback for the Draft 2020 LRFP:

Thank you to Vancouver DPAC for alerting me to the release of the Draft LRFP on Monday afternoon, without this notice, I would have been unaware that feedback was to be provided in less than 48 hours, in preparation for today's 5 pm VSB Facilities Meeting.

In April 2019 I presented to the Facilities and Planning Committee to advocate for Southlands Elementary to be considered for future seismic mitigation and to present the unique characteristics of our IB PYP school relevant to the 2019 LRFP. I did not receive any follow up from VSB.

I have been attempting to follow developments and support my school in this process by attending the in-person consultation in Feb 2019 at Kitsilano, and the online Build2Learn survey; and one virtual Build2Learn consultations, and joining several DPAC Facilities Committees meetings over the years.

With careful review of the 2020 LRFP I am disappointed and discouraged to see the current and future scenarios, both for Southlands and the Southwest Region.

I do not see any evidence that Southlands will become a seismically safe school in the short or long term.

Yes, we are notionally listed five years from now for consideration in the SMP, yet we have seen that there is no security for being listed, as evidenced by Point Grey Secondary moving from #3 (2019 LRFP) to being entirely struck from the list, to a future consolidation (2020 LRFP). At the same time VSB forecasts Southlands with drastic reduced enrollment that will fall short of the target preferred school size 300-550, by highlighting that there will be future available seats in other elementary schools; of which two of these schools remain to be in very poor building condition (Kerrisdale and Kitsilano from the UBC / Kits Region). Which leaves only Maple Grove, one of the nine elementary schools, to be in "excellent" building condition and two, Shaughnessy and Trafalgar as "fair".

I do not see evidence that our local community programming is being acknowledged with no reference to the two onsite child care programs at Southlands: Jericho Kids Club (since 2002) and Creative Minds Early Learning Centre (since 1985).

I do not see recognition or initiative to preserve our IB PYP program should Southlands school become uninhabitable due to safety concerns.

I do not see evidence that VSB desires to provide residents in our geographical area to attend a local / neighbourhood seismically safe school. The loss of market share to the local private schools St. George's Junior and Senior; Crofton House and ICS is understandable: parents who can afford to send their children to neighbourhood seismically safe schools, have done so. However the rest of the in-catchment families have no choice.

My children have now attended VSB schools for 10 years in H1 buildings. As the 2020 LRFP stands, we will start and end our 15 years with VSB in H1 schools. The antidote to the fear for their physical safety should a massive earthquake strike, is the rich and fulfilling learning through the PYP IB at Southlands and the PG Mini at Point Grey Secondary.



I hope that the Trustees and District Staff will re-examine the Southwest Region future scenarios against the LRFP Families Planning Strategy and modify the 2020 Draft LRFP.

Sincerely,

Debra Broadhurst  
Southlands Elementary  
DPAC representative 2019-21  
Past PAC Chair 2017-19

## **LRFPfeedback**

---

**From:** L'École Bilingue PAC  
**Sent:** Wednesday, January 13, 2021 11:57 AM  
**To:** LRFPfeedback  
**Cc:** L'École Bilingue PAC  
**Subject:** LRFP Feedback from L'Ecole Bilingue PAC

To the VSB Trustees,

I am writing on behalf of the L'Ecole Bilingue PAC to express our concerns with the LRFP process, and the ensuing data that has been provided.

The L'Ecole Bilingue PAC is here to represent the voices of the parent community of our school, and we have heard many concerned voices regarding the latest LRFP presented by the VSB. And when looking at the projected enrolment numbers in the LRFP, we believe this does not accurately reflect the situation.

[docs.google.com/spreadsheets/d/1jTNx9oXtZrzxBP90XLJibHTNlg56PEFDcCOG7eXXCpY/edit](https://docs.google.com/spreadsheets/d/1jTNx9oXtZrzxBP90XLJibHTNlg56PEFDcCOG7eXXCpY/edit)

In particular, we feel the numbers are in fact quite deceptive and not reflecting what is actually going on.

### **HIGH DEMAND, REDUCED CAPACITY:**

As a French Immersion school, it has become common place to have a lottery every year for Kindergarten entry. And it seems this has only increased over the past few years, as demand has consistently outstripped supply in not only L'Ecole Bilingue, but throughout all FI schools in BC:

[vancouver.sun.com/news/...spaces](https://vancouver.sun.com/news/...spaces)

In response, rather than increase the capacity, the VSB has decide to actually decrease spots, with the reduction of one kindergarten class at L'Ecole Bilingue. In short, the reduction in capacity at the school is a result of constrained SUPPLY, not the result of DECREASED DEMAND.

The current plan seems to only exasperate this issue.

We feel strongly that the current projected numbers therefore paint an inaccurate and false picture as to what the situation is in our school. Where the current projected numbers simply reflect the artificially constrained capacity, and not the true demand for places in our school. And the fact remains that L'Ecole Bilingue is a school where true demand constantly outstrips capacity, where demand has been INCREASING as opposed to DECREASING.

If anything, we believe the plan should be projecting an **increase of enrolment**, by adding in one, two, or three additional Kindergarten intake classes to address the current demand.

### **NOT TAKING INTO ACCOUNT COV PLANNING:**

Secondly, we feel that the current LRFP is not taking into account the long term planning in terms of residential development and densification being undertaken by the City of Vancouver.

L'Ecole Bilingue sits in a location close to both the Cambie Corridor Phase 3, and the ensuing Broadway Subway plan. Both plans have been created with the intention of increased densification with an increase of families.

In fact, the Cambie Corridor projects 1080 new child care spaces alone:

[vancouver.ca/files/cov/cambie-corridor-planning-program-phase-3-infographic.pdf](https://vancouver.ca/files/cov/cambie-corridor-planning-program-phase-3-infographic.pdf)

And the 2016 Stats Can numbers show an INCREASE of children in the Cambie Corridor. According to the city of Vancouver's own documents ([council.vancouver.ca/20180417/documents/rr2.pdf#page5](https://council.vancouver.ca/20180417/documents/rr2.pdf#page5)), "The Corridor has a higher proportion of children and seniors than the rest of the city as well as a larger household size on average at 2.5 persons compared to the city average of 2.2."

And this doesn't even take into account the increase of densification in the ensuing Broadway Subway development.

If the LRFP is projecting and follows a plan with decreased capacity, where will these new children go?

We have seen impossible waiting lists at Elise Roy in the Yaletown developments, and the same happening with the community around the Olympic Village developments.

It seems that in the previous LRFP, residential planing and densification was not sufficiently taken into account in either community. Let's make sure we don't repeat this mistake again, and it doesn't happen again with the Cambie corridor phase 3/Broadway Subway plan. We need to make sure all projections are done in tandem with residential developments being approved by the City of Vancouver.

#### **LACK OF PUBLIC CONSULTATION:**

Finally, and most importantly, we find it concerning and disheartening at the lack of transparency and public consultation. The fact that there are less than 72 hours to respond to this latest plan makes us question the commitment to dialogue with the community. And this is something that is very troubling.

This plan is a document of utmost importance to the future of our city, and it would be a shame to rush it through without adequate and proper consultation. Children are our future. And it would be a tragedy to rob them of a what could have been, all in the name of administrative efficiency and false deadlines.

#### **SO, WHAT CAN WE DO?**

In short, we would appreciate it if the current LRFP capacity numbers were reevaluated to give a true reflection of current demand at L'Ecole Bilingue, taking into account future residential developments and densification policies, while removing artificial restraints such as restrictive capacity (limiting or reducing kindergarten intake). In other words, what would the demand actually be if we could let in everyone who wanted to go to L'Ecole Bilingue. This would be a much more honest and accurate reflection of what we believe is the correct scenario.

Ideally, we would include an option if we were to actually ADDRESS THE DEMAND by showing what enrolment would be like if there were **1, 2, or even 3 additional kindergarten intake classes**. (Something where the demand data would be very easy to obtain by simply looking at the waitlists every year).

Finally, we believe the entire process should be as transparent as possible, incorporating all stakeholders in a process of constant dialogue.

We owe it to each and everyone of our children to give this process the proper time and consultation it so rightly deserves.

Sincerely,

Enoch Lam on behalf of the L'Ecole Bilingue PAC

## LRFPfeedback

---

**From:** Linda  
**Sent:** Wednesday, January 13, 2021 11:59 AM  
**To:** LRFPfeedback  
**Subject:** Long Range Facilities Planning Strategy 2020-2030

Hello all involved with the process, VSB Trustees and staff,

Quick reply for now; as we, an integral stakeholder in the LRFP process, parents, guardians, some who happen to be employees in the VSB realm, have definitely NOT had enough time to review, share, discuss, collaborate in understanding the LRFP strategy. The highlighted areas below are intended to bring to your awareness, the first level of concerns that an enormous amount of us have with this process. An organization cannot claim to "value strong relationships and open communication" or the following highlighted notations on Inclusion or Transparency, because the an incredible number of diverse families will have had absolutely zero possibility of being aware of this document, due to many reasons, equity, lack of access, languages, economics, health, current covid19 induced restrictions, employment times, so many. So, this all boils down to Transparency. If an organization claims to be open, honest and accountable, then they need to do everything required to be able to claim that statement as true. And that means, ensure that important city wide affecting documents and plans such as this, are sent out, emailed to every single family in the VSB system, with translation information included, as well as published on all the VSB platforms, social and professional. And, a much wider time frame for sending in feedback by email is vital, than has been provided for this submission.

All other issues regarding this LRFP plan will need to be addressed by families as well, after all families have had a chance to review this. I would hope that the trustees will not vote to finalize this draft until the above issues are addressed.

*Our Vision: We inspire student success by providing an innovative, caring and responsive learning environment. Our Mission: To enable students to reach their intellectual, social, aesthetic and physical potential in challenging and stimulating settings which reflect the worth of each individual and promote mutual respect, cooperation and social responsibility. Motto: Shaping our future together. Guiding Principles* **Collaboration: We value strong relationships and open communication to promote the sharing of ideas and practice. Engagement: We encourage and support the use of creative and innovative practices. Excellence: We strive for excellence in everything we do. Inclusion: We value and celebrate diversity by supporting the well-being of every individual, creating a sense of belonging. Transparency: We are open, honest, and accountable.**

Thank you,

kind regards,

Linda

## LRFPfeedback

---

**From:** Anna Xia  
**Sent:** Wednesday, January 13, 2021 12:00 PM  
**To:** LRFPfeedback; dpac  
**Subject:** parents' concern about the LRFO facilities planning

Dear Planning Committee,  
I am PG Secondary parent. We hope the PG school independently running until the replace new facility be build up.

Best regards,  
Anna Xia

## **LRFFeedback**

---

**From:** lili  
**Sent:** Wednesday, January 13, 2021 12:00 PM  
**To:** LRFFeedback  
**Cc:** dpac  
**Subject:** Please do not close the school

Hi,

Here is our story related to PG.

In 2017, my family visited Vancouver at the first time. We went out for a walk after dinner with my friends and happened to see a school named Point Grey Secondary School. Although it was night, the white wall buildings of the school attracted us deeply. My son said "Mon, this school was really beautiful". At that moment we suddenly think about to send my son study abroad. In 2018, we came to Vancouver again and visited all the schools in this area e.g Magee, Prince of Wales, Churchill, Uhill etc. Finally we decided to choose PG. So the first school to fill in the application form is PG. In September of 2019, my son enroll in PG. When the volunteers showed us around the school, we were deeply attracted by every scenery on the campus. We were very happy with our choice at that time.

Unfortunately we heard about the school will be close by some reason recently. My family was so sad. Every member loves PG school so much. Please don't close it. The school has a beautiful campus, where children live and study happily. Although we study in PG for only one year, we love school. At the same time, PG enjoys a very high reputation among international students. We strongly demand that the school not be closed.

PG has accumulated a lot of high reputation which can not be expressed in words. If the school is closed or merged with other schools, then these intangible assets will be lost, it is too sad.

Please consider

Lily (one of the international student parents)

---

## LRFPfeedback

---

**From:** Carmen Cho  
**Sent:** Wednesday, January 13, 2021 12:51 PM  
**To:** Deborah Silver; LRFPfeedback; Estrellita Gonzalez; Janet Fraser; Fraser Ballantyne; Lois Chan-Pedley; Oliver Hanson; Barbara Parrott; Jennifer Reddy; Allan Wong  
**Cc:** Vik Khanna (Vancouver DPAC); dpac@pointgreyparents.org  
**Subject:** RE: Parent feedback on LRFP

Dear Deborah,

Thank you for your feedback and for your suggestions. We have discussed this before, and I certainly agree that a planning study for Point Grey and the broader zone would be helpful and involving the school communities early in the process is important. Please let me know if you want to connect or if you would like me to come to a PAC meeting in the near future.

Warm Regards,  
Carmen

Chair, Vancouver School Board  
Honouring the traditional unceded territory of the Musqueam, Squamish and Tsleil-Waututh Nations

---

**From:** Deborah Silver  
**Sent:** Wednesday, January 13, 2021 12:34 PM  
**To:** LRFPfeedback; Carmen Cho ; Estrellita Gonzalez ; Janet Fraser; Fraser Ballantyne ; Lois Chan-Pedley; Oliver Hanson ; Barbara Parrott ; Jennifer Reddy ; Allan Wong  
**Cc:** Vik Khanna (Vancouver DPAC) ; dpac  
**Subject:** Parent feedback on LRFP

Dear Trustees,

I am writing to offer my feedback about the Long Range Facilities Plan.

I read the Trustees' Vision statement, and I'm heartened to see that you support safe, neighbourhood schools, engaging learning environments, sustainability and community partnerships throughout our district. I agree with those points completely and applaud you for making them a priority, as well as a commitment to building where children live (and will live).

Still, it is confusing to see these admirable principles contradicted in many places throughout the rest of the LRFP. A few examples of this are below.

I was relieved to see the plan to **continue supporting District choice programs** and leave them as they are. My children have both benefited from early French Immersion. My older daughter is at Point Grey Mini School, and it has been absolutely essential in providing her with an academically rigorous setting, where she has blossomed in an environment with other intellectually driven peers.

**The Mini Schools benefit my child and hundreds of others** throughout the District who require this type of specialized learning environment. Given this, I'm particularly focused on 1. the fate of **Point Grey Secondary**, and 2. **its possible consolidation with Prince of Wales**.

- I'd like the business case for Point Grey to be made more readily available so parents can better understand the rationale for combining these schools.
- In order to minimize stress for families and school populations, I also ask that you **build replacement schools before moving children out of their current schools**.
- It's distressing to see that there are no safe secondary schools for children in the Southwest zone – it's horrifying to read that even after SMP, schools can still have "poor" or "very poor" condition ratings. **We need safe schools as soon as possible for our students, teachers and staff. This must be done without splintering school communities.**

If you do move ahead with a consolidation, I appreciate your understanding that **parents and community stakeholders should have a significant role in consultations** about what a new school would include.

- I specifically ask that you keep Point Grey and Prince of Wales Mini Schools intact, and
- guarantee that you will maintain the same number of seats for the respective Mini programs in any new combined school.

Please make a stronger **commitment to the sustainability and neighbourhood principles you list in your vision**.

- Closing Point Grey would mean losing a significant neighbourhood hub.
- We also would lose a school that is ideally situated for active transportation (on the 41<sup>st</sup> Ave. artery, and both along the Arbutus Greenway and near the Oakridge developments, which soon will have considerable new multifamily dwellings).

Many parents are understandably wary of the **VSB's commitment to consultations**. The LRFP public consultation process so far has been very limited, both in scope and time, leaving many of us wondering how you can assure skeptical parents that they truly will have a seat at the table going forward. It's important to address this issue from the outset, and on an ongoing basis. To this end, I'd urge that you **hold inclusive discussions for every Vancouver school zone**.

- This will be in VSB's interest, as well – gaining the trust of parents will mean less resentment and pushback, less time questioning data, and fewer delays.
- You also will benefit from the many ideas sure to spring from open, transparent, collaborative dialogue on how best to improve Vancouver's schools.

Thank you for your time and attention. I look forward to a continued dialogue with you on this plan.

Best regards,

Deborah Stern Silver



## **LRFPfeedback**

---

**From:** Mark Friesen  
**Sent:** Wednesday, January 13, 2021 1:15 PM  
**To:** LRFPfeedback  
**Subject:** Enrollment projections in the LRFP

Greetings,

I applaud the VSB for the recent release of the Long Range Facilities Plan - this is a great step that should provide certainty and a common vision to inform future decisions about vancouver schools.

As a parent with children who attend Edith Cavell Elementary School, I must ask about the enrollment projections. Our school is located along the Cambie Corridor where we see ongoing development and an ongoing increase in housing density. When our oldest child registered for kindergarten 5 years ago, we understand there was a waitlist of 2-3 children. Over the past few years there have been between 20-50 children on the waitlist for cavell kindergarten every year.

How can the enrollment projections show a decline from 330 students in 2021 to 278 students in 2029?

Please explain this rationale, methodology, and how this projection was achieved.

--

Mark Friesen

## **LRFPfeedback**

---

**From:** Michael Lang  
**Sent:** Wednesday, January 13, 2021 2:03 PM  
**To:** LRFPfeedback; Chair (Vancouver DPAC); Secretary (Vancouver DPAC)  
**Subject:** Flawed LRFP Plan

Dear VSB Staff,

As a parent of children in the VSB system I'm very upset that the VSB staff rushing feedback on this LRFP document. In any event I will try my best to communicate my thoughts.

From what I can tell the LRFP document is using a flawed process to show declining enrollment. It appears that VSB staff is deliberately ignoring massive developments and density going up around VSB Schools.

Also, based on this version of the LRFP document, the VSB staff are not listening to parents and the vision put forward by the Board back in November. It's as if that vision presented to VSB staff has been intentionally ignored.

Finally, I'm concerned about the lack of measurable and meaningful goals with regards to Active Transportation and Safe Routes to School. It is clear that the document is full of platitudes on this topic but lacking in accountability.

In conclusion, I am very disappointed and will make my voice heard to Trustees and the DPAC exec. The VSB staff in charge of the LRFP must do better and listen to parents and the Trustees vision from back in November.

Sincerely,

Michael Lang